

CUPOLAdecon 2 Decontamination Unit



for the latest updates go to
www.hughes-safety-showers.co.uk

HUGHES
www.hughes-safety-showers.co.uk

WHITEFIELD ROAD,
BREDBURY, STOCKPORT
CHESHIRE, SK6 2SS
UNITED KINGDOM
Tel: +44 (0)161 430 6618
Fax: +44 (0)161 430 7928
EMAIL: sales@hughes-safety-showers.co.uk

CUPOLAdecon 2



Shown with optional External Sump

The CUPOLAdecon 2 Rapid Decontamination Shelter is the standard unit used by the U.K Fire Service for either decontaminating protective clothing worn by Fire Service personnel, decontaminating equipment or decontaminating members of the public.

It comprises a heavy-duty inflatable frame and removable disposable inner lining, which incorporates an integral sump fitted with drain outlets on each corner. An external sump area can also be fitted to the unit. The inner lining has a removable central partition permitting either the decontamination of two people simultaneously, or alternatively, the segregation of the unit into two decontamination areas for greater flexibility when decontaminating equipment or members of the public. Two shower systems are fitted which incorporate quick release fittings for removable hand-showers and brushes and each are fed from separate feed pipes. One feed pipe could be used as the primary decontamination system which can be connected to an optional detergent inducer; the second could be used as the final wash down and additive rinse. When the CUPOLAdecon 2 is not in use it is stored in a valise type storage bag along with a hand pump, repair kit, guy lines, mallet and pegs.

The unit is exceptionally stable as a result of its unique arched shaped heavy-duty inflatable frame. This is designed to deflect wind and increase stability, even in blustery conditions, offering a secure and stable structure. In addition, the shelter can be pegged to the ground using the fitted guy ropes provided. The frame is made from tough neoprene coated polyester, and is fitted with a pressure relief valve to prevent over-pressurisation.

The inner lining can be easily removed for safe disposal and is made from a bright yellow fluorescent coated polyester, to ensure maximum internal light during the day and night (all lighting external). It has zipped entrances at both ends fitted with drop down splash flaps to eliminate overspray and includes four weatherproof air vents for improved ventilation. A 30mm (12") diameter Air Ventilation Tube is fitted to the lining should a Warm Air Heater/Ventilation Fan be required. The lining is supplied with four transparent windows so that the progress of the decontamination process can be monitored.

An integral nylon/butyl/nylon sump is incorporated into the lining which has 19mm (3/4") outlets fitted to each of the four corners to allow easy draining from the lowest point. Six stackable plastic Floor Panels can be laid within the sump (eight when external sump fitted) so that users are not standing in the contaminated wash-off. An external sump with integral drain outlet can be fitted to the outside of the exit of the unit to act as a suit removal area or an area where decontaminated equipment can be stored. The external sump can be fitted with two Floor Panels should these be required.

The shower systems consist of two 19mm (3/4") lay-flat external water feed pipes with 19mm (3/4") Geka quick coupling inlets. One system can be used to deliver concentrated detergent through both a shower head and a brush (if required) to ensure the effective removal of contaminants from either equipment or protective clothing worn by personnel. The secondary system with its multi-function spray heads will quickly and efficiently rinse off the equipment or protective clothing and can also be connected to an inducer for introducing a stabilising chemical into the water flow. All shower heads (and optional hose brushes) are removable and interchangeable as they are fitted to the external water feed pipes using long spring coil hoses fitted with self-sealing auto shut-off valves. Because of this the shower system can be easily adapted for the decontamination of ambulant or non-ambulant casualties should this be found necessary.

UNIQUE DESIGN DETAILS

1. Operational within 7 minutes - quick and simple to erect, even by one man.
2. Arched shaped heavy duty frame - to withstand extreme weather conditions including blustery storms.
3. 2 stage showering system - for total flexibility of use.
4. Shower system capable of being connected to Chemical Inducers and Water Heater - for improved decontamination action.
5. Multi-function removable hand-held shower heads - ensuring a thorough final wash down and additive rinse.
6. Easily converted for the decontamination of ambulant or non-ambulant casualties - very useful in times of crisis.
7. External water feed pipes - outside contaminated area avoiding contamination.
8. Fluorescent yellow inner lining - to ensure maximum internal light during the day and night.
9. Removable and replaceable inner lining - for safe disposal or decontamination, and inexpensive replacement.
10. Integral sump with four waste outlets for easier removal of contaminated wash-off.
11. Sump made from material used by the military for NBC protection.
12. Sump designed to accept standard Floor Panels - to ensure the safety of decontamination personnel.
13. Optional sump extension outside decontamination area - for easier removal of protective clothing or for the storage of decontamination equipment.
14. 30cm (12") diameter Ventilation Tube fitted to accept Warm Air Heater/Ventilation Fan.
15. Weatherproof air vents - to improve air circulation.
16. Removable central curtain - to allow multi-role use.
17. Splash screens and zip doors - to eliminate overspray.

Assembly time: within 7 minutes

Dimensions: Without sump extension - 3.4 x 2.8 x 2.4 m (floor area 7.2 m²)

With sump extension - 4.0 x 2.8 x 2.4 m (floor area 9.6 m²)

Storage size: 0.8 x 0.9 x 0.6 m

ANCILLARY EQUIPMENT APPLICABLE FOR USE WITH THIS PRODUCT

- Floor Panels – 6 off (8 off if optional external sump is fitted)
- Waste Water Pump
- 6000 Litre Portable Reservoir
- Waste Receptacles
- Waste Outlet Hose
- Twin Inducer
- Water Inlet Manifold
- Air Regulator & Hoses
- Air Inflator (Electric)
- Portaheater 100/50
- Misc Hoses
- Warm Air Heater
- Light Units
- Generator Sets
- Misc Electrical Connection Wires & Extension Cables
- Thermal Cover (or Camouflage Cover)
- 43 Litre Stacking Decon Trays
- Portable Ultrasonic Atomizer
- Portable Air Movement Fan

CUPOLAdecon 2



WHITEFIELD ROAD,
BREDBURY, STOCKPORT
CHESHIRE, SK6 2SS
UNITED KINGDOM

Tel: +44 (0)161 430 6618

Fax: +44 (0)161 430 7928

EMAIL: sales@hughes-safety-showers.co.uk

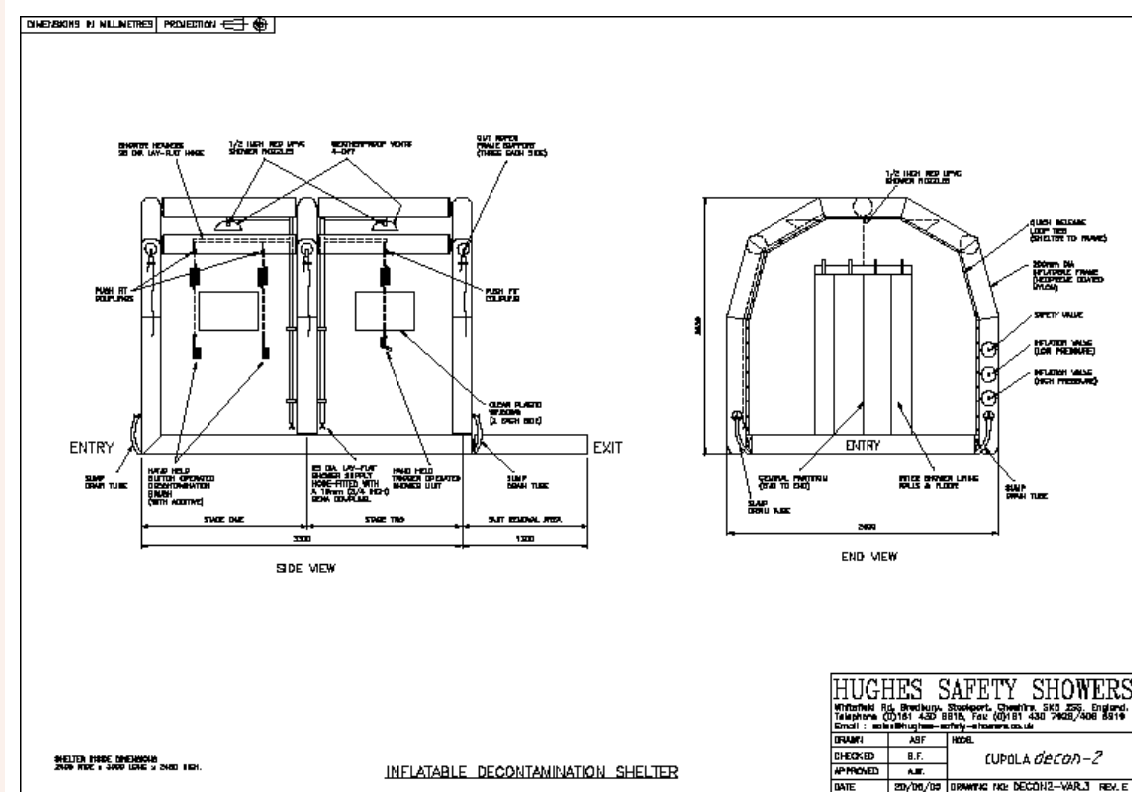
for the latest updates go to

www.hughes-safety-showers.co.uk

TECHNICAL SPECIFICATION

<u>MATERIALS</u>		<u>DIMENSIONS (ERECTED)</u>	
Inflatable Frame:	Neoprene coated polyester	Length:	3400 mm
Liner:	Polyurethane coated polyester	Width:	2800 mm
Sump:	Nylon/butyl/nylon	Height:	2500 mm
Partition	Polyurethane coated polyester		
Windows	Velbex clear plastic		
Cordage	Terylene or nylon	<u>DIMENSIONS (PACKED)</u>	
		Length:	1300 mm
		Width:	680 mm
		Height:	500 mm
		Weight:	85 kgs
<u>VALVES</u>			
Inflate only:	Rectus type 25 KS NW 7.8		
Inflate/Deflate:	Type A5		
Relief:	Mirada 0.2 bar		
<u>MISC</u>			
Water Flow rate:	75 litres/minute		
Water Inlet Size & Type:	2 off 19mm (3/4") Geka quick couplings		
Assembly Time:	Less than 7 minutes		

CUPOLAdecon 2



WARRANTY INFORMATION

The model offered would be guaranteed against bad workmanship or faulty materials for a period of 12 months from despatch our works.